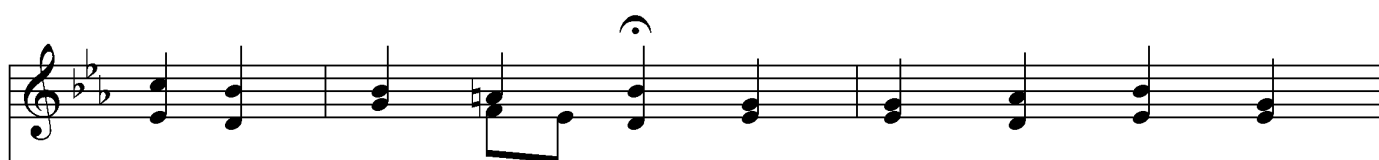


Melcombe, L.M.

Samuel Webbe



1. Spir - it of mer - cy, truth, and love, O shed Thine
 2. In ev - ery clime, by ev - ery tongue, Be God's sur -
 3. Un - fail - ing Com - fort! heav'n - ly Guide! Still o'er Thy



in - fluence from a - bove, And still from age to
 pass - ing glo - ry sung: Let all the lis - tening
 ho - ly church pre - side; Still let man - kind Thy



age con - vey The won - ders of this sa - cred day.
 earth be taught The acts our great Re - deem - er wrought.
 bless - ings prove; Spir - it of mer - cy, truth, and love.

